



Self-Propelled Articulating Booms

Z™ -60/37DC

Specifications

| MODEL | Z-60/37DC |
|-------|-----------|
|-------|-----------|

| Measurements | Metric |
|--|---------|
| Working height maximum* | 20.16 m |
| Platform height maximum | 18.16 m |
| Horizontal reach maximum | 11.15 m |
| Up and over clearance maximum | 7.39 m |
| ▲ Platform length 6 ft model | 0.76 m |
| ▲ Platform width 6 ft model | 1.83 m |
| ▲ Height - stowed | 2.54 m |
| Transport Height - stowed (jib tucked under) | 2.62 m |
| ▲ Length - stowed | 8.15 m |
| Transport Length-Stowed (jib tucked under) | 6.3 m |
| ▲ Width | 2.49 m |
| ▲ Wheelbase | 2.49 m |
| ▲ Ground clearance - center | 0.33 m |

Productivity

| | |
|----------------------------------|---------------------|
| Lift capacity | 227 kg |
| Platform rotation | 160° |
| Vertical jib rotation | 135° |
| Turntable rotation | 355° non-continuous |
| Turntable tailswing - riser up | 0.58 m |
| Turntable tailswing - riser down | 0.81 m |
| Drive speed - stowed | 6.44 km/h |
| Drive speed - raised** | 1.09 km/h |
| Gradeability - 4WD - stowed*** | 45% |
| Turning radius - inside | 2.51 m |
| Turning radius - outside | 5.69 m |
| Controls | 24V DC proportional |
| Tires | 355/55D625, 14 Ply |

Power

| | |
|--------------|--|
| Drive system | 34 V 3-Phase AC |
| Power source | 48 V DC (eight 6V batteries) 390 Ah capacity (FLA standard on DC) |

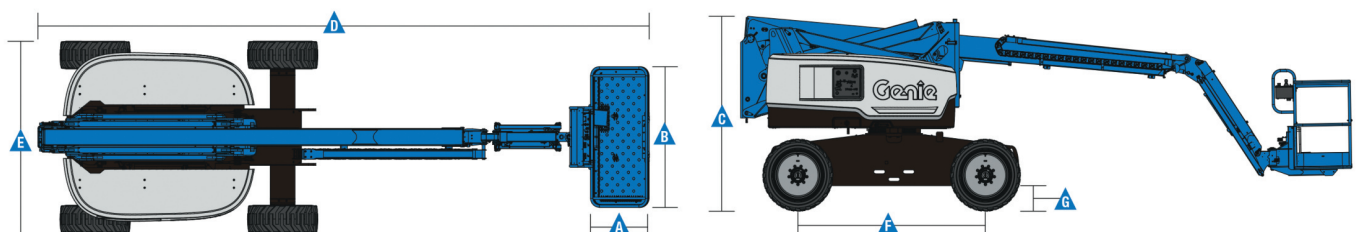
| | |
|-------------------------|---------|
| Auxiliary power unit | 12 V DC |
| Hydraulic tank capacity | 68.14 L |

Weight****

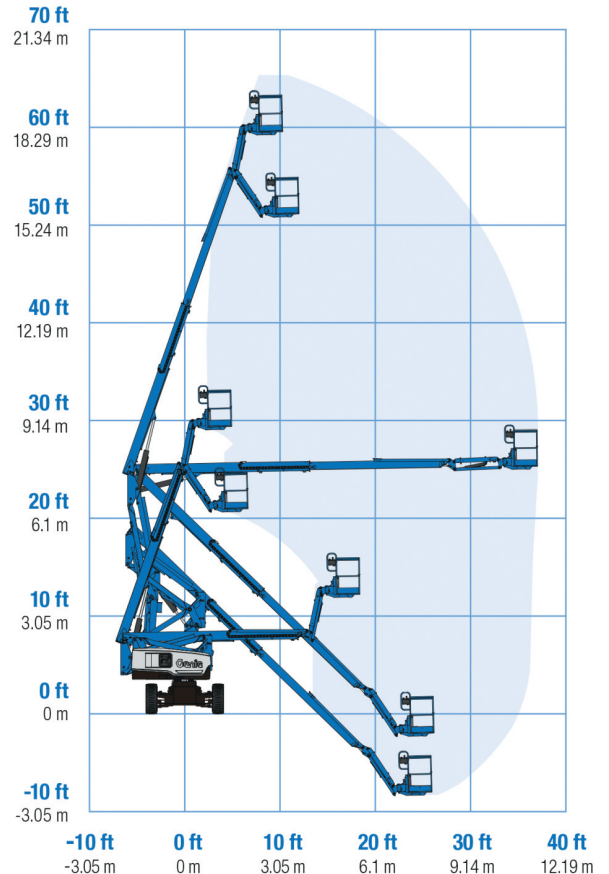
| | |
|-----------|----------|
| Z-60/37DC | 7,530 kg |
|-----------|----------|

Standards Compliance

ANSI A92.5, CSA B354.4, EN 280, AS 1418.10



Range Of Motion Z-60/37DC & Z-60/37FE



* The metric equivalent of working height adds 2 m to platform height. U.S. adds 6 ft to platform height.

** In lift mode (platform raised), the machine is designed to operate on firm, level surfaces only.

*** Gradeability applies to driving on slopes. See operators manual for details regarding slope ratings.

**** Weight will vary depending on options and/or country standards.



Self-Propelled Articulating Booms

Z™ -60/37DC & Z™ -60/37FE

Features

Standard Features

Measurements

- 65 ft 7 in (20.16 m) working height
- 36 ft 7 in (11.15 m) horizontal reach
- 24 ft 3 in (7.39 m) up and over clearance
- Up to 500 lb (227 kg) lift capacity

Productivity

- 5 ft (1.52 m) jib boom with 135° working range
- Digital hour meter with battery charge indicator and diagnostic readout
- 4Wheel AC electric drive system
- Variable speed high efficiency hydraulic power unit
- Self-leveling platform
- Hydraulic platform rotation
- Proportional joystick controls
- Drive enable
- AC power cord to platform
- Horn
- Hour meter
- Tilt alarm
- Descent, motion and travel alarm
- 355° non-continuous turntable rotation
- Locking turntable covers
- Electronic traction control
- Work tray
- Entry toeboard
- Lift Guard™ Contact Alarm

Power

- 48 V DC battery pack (390Ah FLA standard on DC)
- 48 V DC battery pack (415Ah AGM standard on FE)
- 12 V DC auxiliary power
- 25A temperature compensated smart charge system
- Battery charge indicator
- Low battery voltage interrupt

Easily Configured To Meet Your Needs

Platform Options

- Steel 6ft (1.83m) dual entry with side swing gate (standard)
- Steel 8ft (2.44m) tri entry with side swing gate

Jib

- 5 ft (1.52 m) jib boom

Engine Option

- 24.8 HP (18.5 kW) Kubota diesel T4f

Drive Option

- 4WD Electric AC (standard)

Axle Option

- Active oscillation (standard on 4WD)

Tire Options

- Rough terrain foam-filled (standard on FE)
- Rough terrain non-marking foam filled (standard on DC)

Options & Accessories

Productivity Options

- Lift Guard Platform Mesh - Half
- Lift Guard Platform Mesh - Full
- Platform top auxiliary rail
- Air line to platform
- Specialty hydraulic oil (cold weather, fire resistant, or biodegradable)
- Hostile environment kit
- Aircraft protection package (6ft platform only)
- Thumb rocker steer
- Tool tray
- Pipe cradle (pair)*
- Alarm package
- Panel cradle package
- Lockable platform control box covers
- Tow package
- Work and drive light package
- Operator Protective Structure*
- Flashing beacon
- Fall Arrest Bar
- Lift Tools Expo Installer*

Power Options

- 2000 watt 120VAC pure sine wave power inverter
- Cold Start Package



* Available aftermarket only

Genie United States

6464 185th Ave. NE
Redmond, WA 98052
Telephone +1 (425) 881-1800
Toll Free in USA/Canada +1 (800)-536-1800
Fax +1 (425) 883-3475

Distributed By:

Effective Date: January, 2019. Product specifications and prices are subject to change without notice or obligation. The photographs and/or drawings in this document are for illustrative purposes only. Refer to the appropriate Operator's Manual for instructions on the proper use of this equipment. Failure to follow the appropriate Operator's Manual when using our equipment or to otherwise act irresponsibly may result in serious injury or death. The only warranty applicable to our equipment is the standard written warranty applicable to the particular product and sale and we make no other warranty, express or implied. Products and services listed may be trademarks, service marks or trade names of Terex Corporation and/or their subsidiaries in the USA and many other countries. Terex, Genie and AWP are registered trademarks of Terex Corporation or its subsidiaries. © 2019 Terex Corporation.